



PMC CANADA LTD.

Double ZZ Installation Procedure:

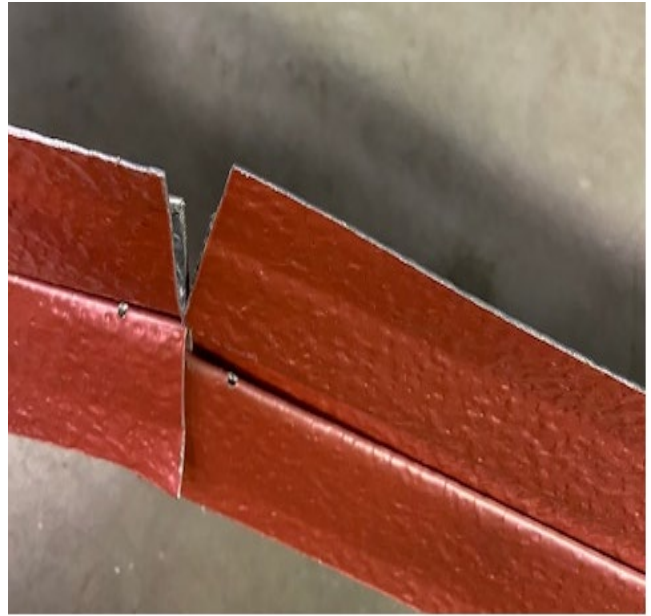
- 1) **Begin** by opening the outer Zed on the large end of the telescoping ZZ Rib.



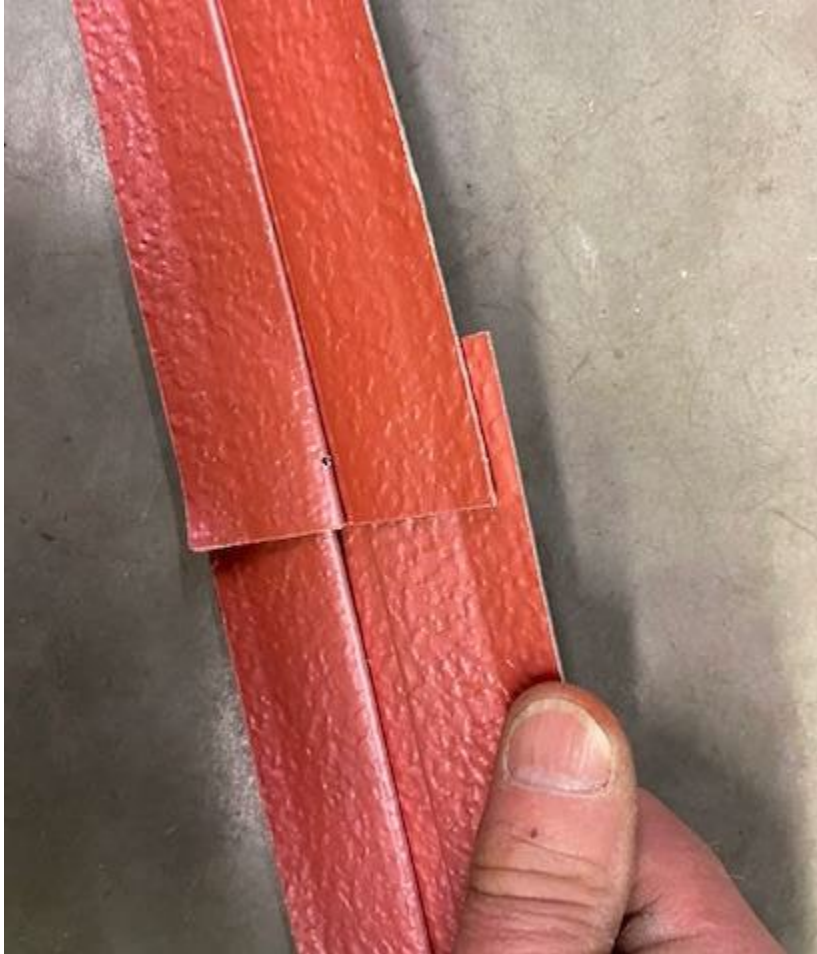
- 2) **Then** open the inner Zed on the small end of the telescoping ZZ Rib.



- 3) **Then** slip the small end of one telescopic Zed Rib into the large end of the next telescopic Zed Rib.



- 4) **Fully seat** the small end of one Zed Rib 2” into the large end of the next Zed Rib as illustrated in succession until the full length of Zed Rib between horizontally running Zed Rib and the starter and/or finish cap.



5) **Side view** of properly connected Zed Ribbing sections for weather shed.

